



Bristol Standard Newsletter



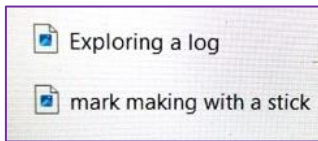
Bristol Standard

TOP TIPS

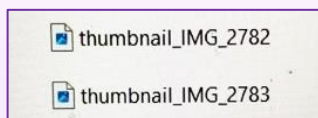
Naming your photos when you upload them onto the computer seems a simple thing to do but it makes so much difference! Easily accessible photos to upload for your evidence rather than spending hours looking through lots of thumbnail/j-pegs for your submission. Simple but saves so much time!



Try this update with new photo and name it



Instead of this...



Check out our weekly Bristol Standard Instagram posts to keep you updated...



You can access our Instagram posts by following Bristol Early Years Instagram account. It's a great way of keeping up to date with all the amazing ways Early Years is celebrated and supported in Bristol. Here is one of our posts..

'Spring is here and the outdoors is coming alive... which means an abundance of great learning opportunities for young children! Why not take a peek at your Bristol Standard Dimension 4/ Physical Environment and the Outdoor Reflective Framework to support your practice and provision? A wealth of inspiration for you and your team!



Bristol Standard Dates for your diaries...

15th May: Introduction to the Bristol Standard 4-6pm (booking link: <https://www.eventbrite.co.uk/e/the-bristol-standard-network-meeting-an-introduction-the-bristol-standard-tickets-656120292457>)

16th May: Reflective Forum: Equality, Diversity and Inclusion

4th July: Reflective Forum: Partnerships with parents

19th Sept: Bristol Standard Family Conference

Please book via this link [Bristol Early Years – Calendar](#) or online on the Bristol Early Years website/ calendar of events



Space Cadets Play Provision

Receiving Bristol Standard validation is such a rewarding (and rather exciting) experience. When you do your utmost for your setting and everyone involved in it, you feel a great sense of achievement to have your hard work recognised by a panel who understands and appreciates your objectives.

If you are a Play Provision/ After School or Holiday Club why not join us on 13th May 7-8pm (Zoom).

Michelle will be there to help deep dive into a dimension and it provide a great opportunity to meet and network with other Play Provision settings.

Welcome to the Bristol Standard family...



Bristol Standard Champions -Bristol University Nursery

Reflecting on our families.

When we did our year 1 submission we felt that Dimension 9, Partnership with parents and the local community; our family knowledge and connections between home and nursery could be strengthened. We wanted to invite our parents into our setting and share their skills and build knowledge of their faith and culture. We have been very fortunate that many of our families have joined us in this target.

On our year 2 submission, whilst looking at Dimension 3 - The Reflective and Researchful Practitioner; we all realised that as a setting we are very reflective of our practice and have the children at the centre of our ideas and thoughts. "The children will be cared for by adults who are sharing thoughtful and reflective conversations, both at home and at nursery. These reflective conversations will enable those sharing interactions with the children to be on the same page, thinking together about what is going well and strategies which support them. Families will feel included and valued, involved in shared conversations and having their opinion considered in what might help. They will be able to share strategies that they use at home, which will also be useful to consider in the setting, and vice versa." By involving our parents more in our setting has allowed us to build better relationships and in turn better understanding of our children and families. We have been working on "Sharing in more conversations and daily feedback with families to share information, learn from them and reflect together about learning, and supporting behaviour." Our families have joined us in sharing Lunar New Year, Eid, Neuroscience, bridge design and we have some more opportunities to come, especially supporting our school leavers.

Bristol University Nursery



Bristol Standard: Bin, Bottle, Brew....

Bin: Giving paper copies of the dimension we were focusing on was a waste of paper/time as it works better for us viewing online and having open discussions.

Bottle: Our reflective practice and the rich learning opportunities we provide for the children. We recognise our research and reflection, as a team, impacts on every aspect of the setting; the children, our families, our learning environment, SEND etc.

Brew: We are really working towards creating sense of belonging for all of our children and valuing our families diversity in a meaningful way.



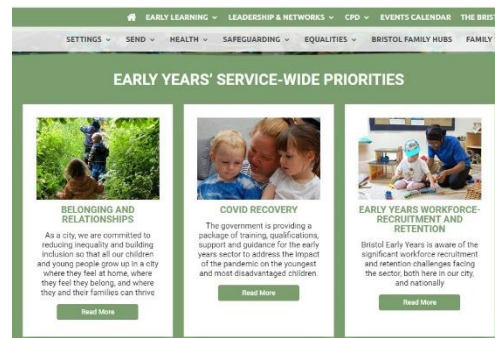
Welcome to the Bristol Standard family...



Bristol Service Wide Priorities:

- *Belonging and Relationships*
- *Covid Recovery*
- *Early Years Workforce-Recruitment & Retainment*
- *Equalities*
- *Family Learning*
- *SEND*
- *Communication & Language*
- *Childcare Expansion*

For more information head to <https://www.bristolearlyyears.org.uk/>



Get outside and get involved!!!

Bristol Standard Outdoor Play and Learning Reflective Framework

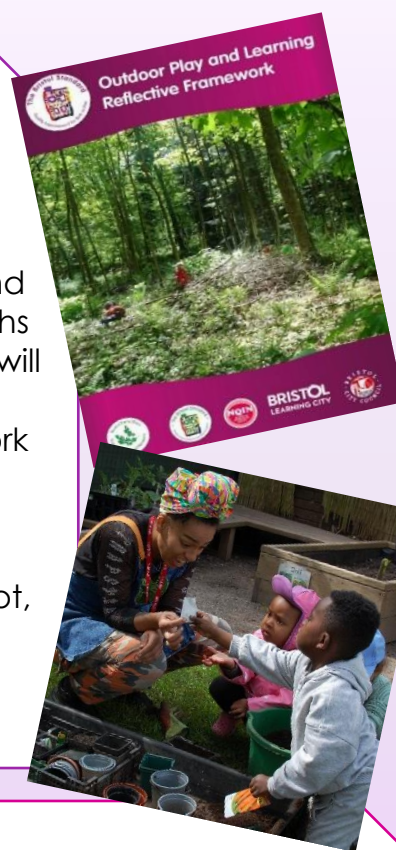
We are really excited to be piloting the new Outdoor Play and Learning Reflective Framework using the online system.

This involves selecting only one of the chapters in the framework and using this to support reflective discussions, to identify current strengths and targets for improvement in your outdoor experiences. The pilot will take place from the summer term, which is the perfect time to consider the outdoor experiences offered to your children. Your work would not be submitted for validation until early 2025.

The link below is for the online version of the Framework.

<https://www.bristolearlyyears.org.uk/early-learning/outdoor-learning/outdoor-audit-2021/> If you would like to be part of the pilot, please discuss this further with your Lead Teacher, Bristol Standard Mentor or feel free to email Sarah Wardle directly.

sarah.wardle@bristol-school.uk



Bristol Standard for Childminders

Avonvale Montessori Childminding "The Bristol Standard has supported us to look at things afresh and notice more. The permanent puddle came about by looking at how the children play and thinking about our learning environment. During lockdown we taught them how to fish for crabs and there are ceramic fish in there for them to find too! The Reflective Forums have given us some great ideas such as putting pots and pans in the tree. The way people talk about their thinking, review their ideas and discuss how they do things makes you want to do it yourself and have a go!" - Mandy and Colin

